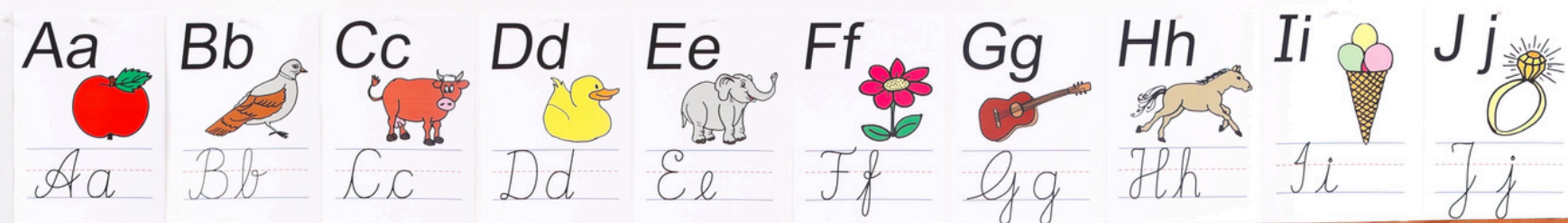


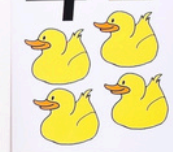



Bb Cc Dd Ee Ff Gg  
 Ii Jj Kk Ll Mm Nn  
 Pp Qq Rr Ss Tt Uu  
 Vv Ww Xx Yy Zz

Aa Bb Cc Dd Ee Ff Gg Hh Ii Jj  


|            |            |            |
|------------|------------|------------|
| 3 x 1 = 3  | 4 x 1 = 4  | 5 x 1 = 5  |
| 3 x 2 = 6  | 4 x 2 = 8  | 5 x 2 = 10 |
| 3 x 3 = 9  | 4 x 3 = 12 | 5 x 3 = 15 |
| 3 x 4 = 12 | 4 x 4 = 16 | 5 x 4 = 20 |
| 3 x 5 = 15 | 4 x 5 = 20 | 5 x 5 = 25 |
| 3 x 6 = 18 | 4 x 6 = 24 | 5 x 6 = 30 |
| 3 x 7 = 21 | 4 x 7 = 28 | 5 x 7 = 35 |
| 3 x 8 = 24 | 4 x 8 = 32 | 5 x 8 = 40 |
| 3 x 9 = 27 | 4 x 9 = 36 | 5 x 9 = 45 |
| 7 x 1 = 7  | 8 x 1 = 8  | 9 x 1 = 9  |
| 7 x 2 = 14 | 8 x 2 = 16 | 9 x 2 = 18 |
| 7 x 3 = 21 | 8 x 3 = 24 | 9 x 3 = 27 |
| 7 x 4 = 28 | 8 x 4 = 32 | 9 x 4 = 36 |
| 7 x 5 = 35 | 8 x 5 = 40 | 9 x 5 = 45 |
| 7 x 6 = 42 | 8 x 6 = 48 | 9 x 6 = 54 |
| 7 x 7 = 49 | 8 x 7 = 56 | 9 x 7 = 63 |
| 7 x 8 = 56 | 8 x 8 = 64 | 9 x 8 = 72 |
| 7 x 9 = 63 | 8 x 9 = 72 | 9 x 9 = 81 |

1   
 2   
 4   
 5 



# OPVG INTERNATIONAL SCHOOL

A project of overseas Pakistanis volunteers

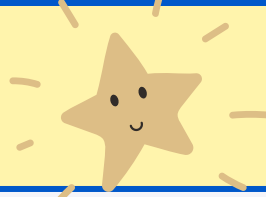
## Pre-school calendar 2024-2025



0 1 2 3 4 5 6 7 8 9  
 x + x = +  
 x + = - +







# ACADEMIC CALENDAR 2024-2025



## SEPTEMBER

| S  | M  | T  | W  | T  | F  | S  |
|----|----|----|----|----|----|----|
| 1  | 2  | 3  | 4  | 5  | 6  | 7  |
| 8  | 9  | 10 | 11 | 12 | 13 | 14 |
| 15 | 16 | 17 | 18 | 19 | 20 | 21 |
| 22 | 23 | 24 | 25 | 26 | 27 | 28 |
| 29 | 30 |    |    |    |    |    |

## OCTOBER

| S  | M  | T  | W  | T  | F  | S  |
|----|----|----|----|----|----|----|
|    |    | 1  | 2  | 3  | 4  | 5  |
| 6  | 7  | 8  | 9  | 10 | 11 | 12 |
| 13 | 14 | 15 | 16 | 17 | 18 | 19 |
| 20 | 21 | 22 | 23 | 24 | 25 | 26 |
| 27 | 28 | 29 | 30 | 31 |    |    |

## NOVEMBER

| S  | M  | T  | W  | T  | F  | S  |
|----|----|----|----|----|----|----|
|    |    |    |    |    | 1  | 2  |
| 3  | 4  | 5  | 6  | 7  | 8  | 9  |
| 10 | 11 | 12 | 13 | 14 | 15 | 16 |
| 17 | 18 | 19 | 20 | 21 | 22 | 23 |
| 24 | 25 | 26 | 27 | 28 | 29 | 30 |

## DECEMBER

| S  | M  | T  | W  | T  | F  | S  |
|----|----|----|----|----|----|----|
| 1  | 2  | 3  | 4  | 5  | 6  | 7  |
| 8  | 9  | 10 | 11 | 12 | 13 | 14 |
| 15 | 16 | 17 | 18 | 19 | 20 | 21 |
| 22 | 23 | 24 | 25 | 26 | 27 | 28 |
| 29 | 30 | 31 |    |    |    |    |

## JANUARY

| S  | M  | T  | W  | T  | F  | S  |
|----|----|----|----|----|----|----|
|    |    |    | 1  | 2  | 3  | 4  |
| 5  | 6  | 7  | 8  | 9  | 10 | 11 |
| 12 | 13 | 14 | 15 | 16 | 17 | 18 |
| 19 | 20 | 21 | 22 | 23 | 24 | 25 |
| 26 | 27 | 28 | 29 | 30 | 31 |    |

## FEBRUARY

| S  | M  | T  | W  | T  | F  | S  |
|----|----|----|----|----|----|----|
|    |    |    |    |    |    | 1  |
| 2  | 3  | 4  | 5  | 6  | 7  | 8  |
| 9  | 10 | 11 | 12 | 13 | 14 | 15 |
| 16 | 17 | 18 | 19 | 20 | 21 | 22 |
| 23 | 24 | 25 | 26 | 27 | 28 |    |

## MARCH

| S  | M  | T  | W  | T  | F  | S  |
|----|----|----|----|----|----|----|
|    |    |    |    |    |    | 1  |
| 2  | 3  | 4  | 5  | 6  | 7  | 8  |
| 9  | 10 | 11 | 12 | 13 | 14 | 15 |
| 16 | 17 | 18 | 19 | 20 | 21 | 22 |
| 23 | 24 | 25 | 26 | 27 | 28 | 29 |
| 30 | 31 |    |    |    |    |    |

## APRIL

| S  | M  | T  | W  | T  | F  | S  |
|----|----|----|----|----|----|----|
|    |    |    |    |    |    |    |
|    |    | 1  | 2  | 3  | 4  | 5  |
| 6  | 7  | 8  | 9  | 10 | 11 | 12 |
| 13 | 14 | 15 | 16 | 17 | 18 | 19 |
| 20 | 21 | 22 | 23 | 24 | 25 | 26 |
| 27 | 28 | 29 | 30 |    |    |    |

## MAY

| S  | M  | T  | W  | T  | F  | S  |
|----|----|----|----|----|----|----|
|    |    |    |    | 1  | 2  | 3  |
| 4  | 5  | 6  | 7  | 8  | 9  | 10 |
| 11 | 12 | 13 | 14 | 15 | 16 | 17 |
| 18 | 19 | 20 | 21 | 22 | 23 | 24 |
| 25 | 26 | 27 | 28 | 29 | 30 | 31 |

## JUNE

| S  | M  | T  | W  | T  | F  | S  |
|----|----|----|----|----|----|----|
| 1  | 2  | 3  | 4  | 5  | 6  | 7  |
| 8  | 9  | 10 | 11 | 12 | 13 | 14 |
| 15 | 16 | 17 | 18 | 19 | 20 | 21 |
| 22 | 23 | 24 | 25 | 26 | 27 | 28 |
| 29 | 30 |    |    |    |    |    |

## JULY

| S  | M  | T  | W  | T  | F  | S  |
|----|----|----|----|----|----|----|
|    |    |    |    |    |    |    |
|    |    | 1  | 2  | 3  | 4  | 5  |
| 6  | 7  | 8  | 9  | 10 | 11 | 12 |
| 13 | 14 | 15 | 16 | 17 | 18 | 19 |
| 20 | 21 | 22 | 23 | 24 | 25 | 26 |
| 27 | 28 | 29 | 30 | 31 |    |    |

## AUGUST

| S  | M  | T  | W  | T  | F  | S  |
|----|----|----|----|----|----|----|
|    |    |    |    |    |    |    |
|    |    |    |    |    | 1  | 2  |
| 3  | 4  | 5  | 6  | 7  | 8  | 9  |
| 10 | 11 | 12 | 13 | 14 | 15 | 16 |
| 17 | 18 | 19 | 20 | 21 | 22 | 23 |
| 24 | 25 | 26 | 27 | 28 | 29 | 30 |
| 31 |    |    |    |    |    |    |





# IMPORTANT DATES OF SESSION 2024-2025



## General Agenda of 2024-2025

|                 |               |
|-----------------|---------------|
| Session starts  | 2nd September |
| First term ends | 29th January  |
| 2nd term starts | 5th February  |
| Annual term     | 4th August    |

## Examination 2024 - 2025

|                   |              |
|-------------------|--------------|
| First term starts | 20th January |
| Annual Exam       | 4th August   |

## New session 2024-2025

|        |          |
|--------|----------|
| Starts | 2nd Sept |
|--------|----------|

\* Note: Some of the mentioned dates are subjected to minor change by management.

## Parents Teacher Meeting

|            |               |
|------------|---------------|
| 1st PTM    | 22nd November |
| 2nd PTM    | 14th February |
| 3rd PTM    | 2nd May       |
| Annual day | 1st August    |

## Breaks

|            |                      |
|------------|----------------------|
| Winter     | 29th January-5th Feb |
| Ramdan-Eid | 21st March-4th April |
| Summer     | 6th June - 20th June |
| Annual     | 15th-31st Aug        |

## Fun day

|            |           |
|------------|-----------|
| Celebrated | 27th June |
|------------|-----------|

## Public Holidays

|                    |               |
|--------------------|---------------|
| Labour day         | 1st May       |
| Quaid e Azam day   | 25th December |
| Kashmir day        | 5th February  |
| Saudi National day | 23rd Sep      |

## Party

|           |            |
|-----------|------------|
| Eid Milan | 11th April |
|-----------|------------|

## Events and competitions

|                      |                    |
|----------------------|--------------------|
| Math month           | September          |
| English month        | October            |
| Urdu month           | November           |
| Science month        | December           |
| Resolution day celeb | 21st March         |
| Earth day            | 28th March         |
| Kashmir day          | 7th February       |
| Defence day          | 6th September      |
| Welcome day          | 1st September 2025 |

# Themes of session 2024-2025



**Healthy eating!**

**September**



**Cleanliness month**

**December**



**Animals month**

**March**

**Islam Month**

**June**



**Sports months**

**October**



**Recycling month**

**January**



**Mothers month**

**April**



**Computer month**

**July**



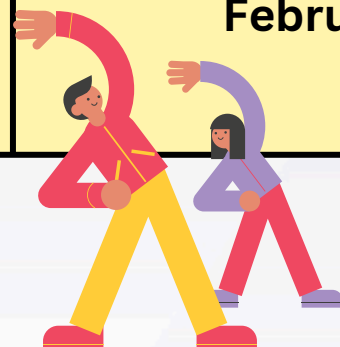
**Siblings months**

**November**



**Exercise**

**February**



**Space**

**May**



**Teachers month**

**August**

